

Aficio® 2090 & 2105

Hits the Mark...



On Performance


RICOH®

Aficio® 2090 & 2105

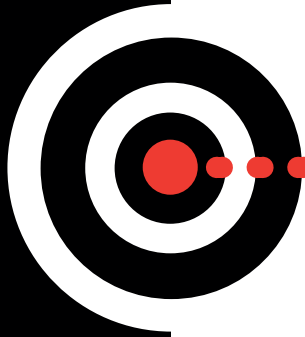
The Next Generation



Built to support work-intensive walk-up environments, networked corporate workgroups, central reprographics departments or print-for-pay operations, the Ricoh® Aficio® 2090 & 2105 easily rip through copy/print runs at **90 and 105 pages per minute**, plus offer ultimate versatility no matter what your job demands.

A close-up photograph of a person's hands holding a bow and several arrows. The person is wearing a dark green long-sleeved shirt and light-colored pants. The background is a bright, sunny outdoor setting with a green field and a clear blue sky. A semi-transparent white box containing text is overlaid on the right side of the image. On the left side, there is a vertical red bar with a series of black and red dots and a red arrow pointing right.

The Aficio 2090 and 2105 systems are based on a revolutionary new next generation platform which combines key applications like Copying, Printing and Scanning onto one main controller board for total system integration.



INPUT EFFICIENCY

The **Aficio 2090 & 2105** give you more than sheer power; they allow total control over the input, management and output of all your documents. Scanning options optimize versatility by enabling hard copy integration into digital networks. Workflow productivity is further enhanced with:

Scan to E-mail from the control panel (standard with Printer/Scanner Kit), an efficient, easy-to-use solution that allows you to scan hard copy documents to e-mail (documents are sent in PDF or TIFF format) for immediate distribution.

- Scan to multiple e-mail addresses from the user-friendly touch panel display
- Scan documents from the document feeder or platen glass
- Store up to 2,000 e-mail addresses for instant access



ScanRouter™ digital document delivery system, provides you with valuable tools for streamlining document distribution.

- Loads onto a server PC; directly interfaces with your system's network scanner
- Scans printed documents, photos, blueprints, forms, etc. to produce digital files that can be electronically transmitted over your network
- Administrators can create/modify settings at customized In-Trays for up to 2000 users
- Staff/clients automatically receive documents via e-mail or by notification
- ScanRouter solutions offer unchallenged productivity, reliability, security and simplicity for your employees, partners and clients



A convenient resource that turns the **Aficio 2090 & 2105** into a network scanner. GlobalScan® serves as a digital document routing system that accepts scanned documents and creates files for electronic transmission over your network as an attached e-mail... all from the touch panel display.

GlobalScan facilitates:

Network Scanning

- Connects up to 100 MFP's through a single server
- Saves on high cost of multiple desktop scanners
- Combines scanner, copier and printer operations into one office system
- Requires no additional network connections



Electronic Document Distribution

- Rapid distribution of scanned documents
- Optional Document Management utilities for file storage and fax management

Global Address Book Access

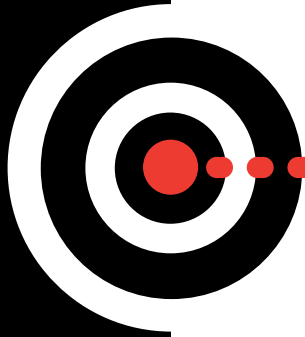
- Unlimited addresses can be accessed from your company's e-mail system utilizing Lightweight Directory Access Protocol (LDAP)
- Addresses are displayed at the touch panel display for easy selection
- E-mail server changes are reflected instantly through the Aficio 2090 & 2105

Ad-Hoc E-Mail Entry

- Entry of any valid Internet e-mail address from the Aficio 2090 & 2105 Touch Panel Display

Security

- Network Log In Authentication
- Scanned documents are encrypted with 128-bit encryption using SSL (Secure Socket Layer)

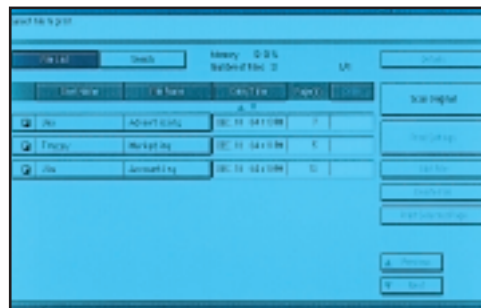


DOCUMENT MANAGEMENT

The **Aficio 2090 & 2105** give you the capacity to manage your documents from the desktop. Document Management is enhanced with:

A versatile **Document Server**, which lets users view and manage all stored information right from their system's hard drive. All electronically created and paper-based originals can be linked, managed and enhanced with these functions:

- File Merge Printing
- Scanned Page Printing
- Print-on-Demand
- Secure Printing
- Proof Printing



The **DeskTopBinder™** document management program lets you display saved documents, create notes, view and combine different documents/formats, and print them directly from the standard toolbar. Input paper documents from your network scanner into the DeskTopBinder.

- Convert image files into text files or multi-formatted to single-format documents
- Export files to specific applications without file format conversion
- View the Aficio 2090 or 2105's Document Server so you can reprint and copy the document from the system's hard drive
- Create shared file folders and authorize access control within your network



CONNECTIVITY MADE SIMPLE

Make a powerful connection when you add the advanced Printer/Scanner Kit to your **Aficio 2090 & 2105**.

- 90 or 105 ppm Laser Printing
- True 1200 dpi Resolution Printing
- Sophisticated Finishing
- Standard PCL5e/PCL6
- Adobe® PostScript3 (optional)

The Aficio 2090 & 2105 support **Ricoh's RPCS™ (Refined Print Command Stream)**, an intuitive, simple-to-operate icon-based driver user interface which lets you select any print job setting and run any print job with just one click. Users can save different printer settings for different jobs efficiently, store them under a user-created icon, and generate professional-looking documents instantly.

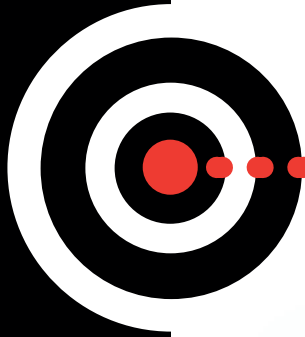


SmartNetMonitor, Ricoh's Network Printer Management Software solution and plug-in's allow users or IT personnel to remotely monitor, manage and configure their network printers, faxes, scanners and multifunction devices. Key productivity features include monitoring toner and paper levels, device configuration, e-mail error notification, recovery printing and parallel printing to multiple devices. Certified Ricoh plug-ins are also available for HP Web JetAdmin, CA UniCenter TNG, HP OpenView and Tivoli NetView.

The **Fieri® EB-105EX print controller** incorporates powerful Fieri architecture for smooth, consistent printing at astonishing speed. The easy-to-use EB-105EX boasts multiple document-building tools, print drivers for many platforms, utilities for remote job management, and a local interface for immediate control on the Fieri.



Fast, easy networking is the name of the game with the Aficio 2090 & 2105. New architecture allows flawless network integration whether using state-of-the-art wireless or other high-speed connections. These versatile systems also enable mainframe connectivity making them total output management solutions for data centers as well.



PROFESSIONAL OUTPUT

Professional Output at the touch of a button...



Want a color cover or need special pages to be distributed throughout your document sets? The **Interposer** capability expands flexibility by inserting pre-printed or color output anywhere within documents from either walk-up or directly from the desktop.

With the Aficio 2090 & 2105, complex jobs with **covers, tabs, or chapters**, can be handled more easily. Simply make your selections with the touch of a button and start the job. The Touch Panel Display shows exactly what stock is located in each tray for hassle-free programming.



Paper replenishment is never an issue with an **8,050-sheet total paper capacity**. Seven different paper sources assure continuous production without interruption: one Tandem Tray (holds up to 2,000 sheets of 8½" x 11" paper); two 500-sheet Universal Trays (up to 11" x 17"); a Large Capacity Tray with three more letter-size trays (for 16 lb. Bond or heavier paper, index or cover stock); plus a 500-sheet Bypass Tray that handles up to 12" x 18" size paper.

Aficio 2090 & Aficio 2105

General Specifications

Printing Process:	Dry Process (Dual component)
Reading Element:	4 channel CCD Array
Configuration:	Console
Standard Memory:	128MB / 80GB (40GB x 2)
Warm Up Time:	6 minutes
Quantity Indicator:	1 to 9,999
Power Source:	240V/60Hz/20A
Dimensions (WxDxH):	82.8" x 33.8" x 58.1" (with ARDF and Finisher)
Weight:	995.5 lbs. (Full System)

Paper Supply

Paper Weight:	16 lb. Bond - 90 lb. Index
Paper Capacity:	Tray 1 - Tandem Tray 1000 sheets x 2 Trays 2 and 3 500 Sheets Each (User Adjustable)
Paper Size:	5/2" x 8/2" to 11" x 17"
Standard Paper Capacity:	3,000 Sheets

System Specifications

Speed

First Copy:	Aficio 2090/3.5 seconds Aficio 2105/3.2 seconds
Copying Speed:	Aficio 2090: 90-ppm Aficio 2105: 105-ppm
Copy Resolution:	True 1,200 x 1,200 dpi
Gray Scale:	256 Levels
Original Type:	Book/Sheet
Original Size:	Up to 11" x 17"
Copy Size:	5/2" x 8/2" to 11" x 17"

Reduction/Enlargement

Reproduction Ratios:	25%, 50%, 65%, 73%, 78%, 85%, 93%, 121%, 129%, 155%, 200%, 400%
Zoom:	25% to 400% in 1% increments

System Accessories

Automatic Reversing Document Feeder

Original Size:	5/2" x 8/2" to 11" x 17"
Original Paper Weight:	Simplex 16 lb. Bond - 42 lb. Bond Duplex 16 lb. Bond - 34 lb. Bond
Original Stack Capacity:	100 Sheets

RT46 Large Capacity Tray (LCT)

Paper Size:	5/2" x 8/2" to 8/2" x 11" (LEF)
Paper Capacity/Weight:	Trays 4 and 5 1,000 Sheets Each (16 lb. Bond - 110 lb. Index and 80 lb. Cover) Tray 6 2,550 Sheets Each (16 lb. Bond - 90 lb. Index)

Bypass Tray (Tray 7)

Paper Size:	Up to 12" x 18"
Paper Capacity/Weight:	500 Sheets (16 lb. Bond - 110 lb. Index and 80 lb. Cover)

SR840 Finisher with 100 Sheet Stapler

Dimensions (WxDxH):	32" x 29.2" x 39"
Weight:	143 lbs. (Finisher Only)

Shift Tray

Stack Capacity:	3,000 Sheets (8/2" x 11") 1,500 Sheets (8/2" x 11" and 12" x 18" SEF) 500 Sheets (5/2" x 8/2" LEF)
-----------------	--

Paper Size:	5/2" x 8/2" to 12" x 18"
Paper Weight:	14 lb. Bond to 110 lb. Index
Staple Capacity:	2-100 Sheets (8/2" x 11") 2-50 Sheets (8/2" x 14", 11" x 17")
Staple Position:	Top, Bottom, 2 Staples, Top Slant

Proof Tray

Stack Capacity:	500 Sheets (5/2" x 8/2" to 8/2" x 11") 250 Sheets (8/2" x 14" to 12" x 18")
-----------------	--

Paper Size:	5/2" x 8/2" to 12" x 18"
Paper Weight:	14 lb. Bond to 110 lb. Index and 80 lb. Cover

Type 1075 Hole Punch: 2 or 3 Holes (user selectable)

Jogger Unit Type 1075: Supports the SR840 Finisher only

SR860 Finisher- 50-Sheet Finisher with Saddle Stitch

(Available for the Aficio 2090 only)

Dimensions (WxDxH):	28" x 24.8" x 38.4"
Weight:	138.6 lbs. (Finisher Only)

Upper Shift Tray

Paper Capacity:	500 Sheets (8/2" x 11") 250 Sheets (8/2" x 14" to 12" x 18")
-----------------	---

Paper Size:	5/2" x 8/2" to 12" x 18"
Paper Weight:	14 lb. Bond to 110 lb. Index and 80 lb. Cover

Lower Shift Tray

Paper Capacity:	2,500 Sheets (8/2" x 11" LEF) 1,250 Sheets (8/2" x 11" to 12" x 18" SEF)
-----------------	---

Paper Size:	5/2" x 8/2" to 12" x 18"
Paper Weight:	16 lb. Bond to 110 lb. Index and 80 lb. Cover

Proof Tray

Paper Capacity:	250 Sheets (5/2" x 8/2" to 8/2" x 11") 50 Sheets (8/2" x 14" to 12" x 18")
-----------------	---

Paper Size:	5/2" x 8/2" to 12" x 18"
Paper Weight:	14 lb. Bond to 90 lb. Index

Type 1045 Hole Punch: 2 or 3 Holes (user selectable)

Interposer (available with both the SR840 and SR860 Finishers)

Paper Size:	5/2" x 8/2" to 11" x 17"
Paper Weight:	17 lb. Bond to 110 lb. Index and 80 lb. Cover
Paper Capacity:	200 Sheets
Dimensions (WxDxH):	20" x 24" x 8"
Weight:	26.4 lbs.

11" x 17" Tray Kit

Paper Size:	8/2" x 11" to 11" x 17" (SEF - Adjustable)
-------------	---

Dimensions (WxDxH):	20" x 8.6" x 21.4"
Paper Capacity:	1,000 Sheets

Printer/Scanner Kit Type 2105 Specifications

Printer

Print Speed:	Aficio 2090: 90 ppm Aficio 2105: 105 ppm
GPU:	Duron 800MHz
Interface:	Standard: Parallel IEEE 1284 (Type C), 10/100 BaseT Ethernet Network Interface Card Optional: Wireless LAN (IEEE 802.11b), USB 2.0, IEEE 1394
Network Protocol:	TCP/IP, IPX/SPX, AppleTalk, NetBEUI
Memory:	Optional 256MB Required for Printing
Language:	Standard: RPCS (Refined Print Command Stream), PCL5e/PCL6 Optional: Adobe PostScript3
Print Resolution:	RPCS: 300/600/1200dpi PCL5e: 300/600 dpi PCL6: 600/1200 dpi PS3: 600/1200 dpi

Windows Drivers

Drivers for RPCS:	95/98/Me/2000/NT4.0/XP
Drivers for PCL5e:	95/98/Me/2000/NT4.0/XP
Drivers for PCL6:	95/98/Me/2000/NT4.0/XP
Drivers for PS3:	95/98/Me/2000/NT4.0/XP Macintosh 8.6 or higher (excluding 10.0)

Utilities: SmartNetMonitor (Network Printer Management Software)

Printer Options

	Adobe PostScript3, 256MB Memory Option, IEEE1394 I/F, USB 2.0 I/F, Wireless LAN (802.11b) I/F
--	--

Scanner Specifications

Scan Speed:	80 ipm (Aficio 2090/2105)
-------------	---------------------------

Imaging

Optical Resolution:	600 dpi
Output Format:	PDF, TIFF, JPEG

Connectivity

Interface Support:	Standard: Ethernet 10/100 BaseT, Parallel IEEE 1284 Optional: Wireless LAN IEEE802.11b, IEEE1394
--------------------	---

Bundled Drivers: Network TWAIN

Scan to E-mail

Scan to E-mail:	SMTP Gateway and TCP/IP required
Destination Addresses:	500 (maximum)

Stored Destination

Addresses:	2,000 (maximum)
Bundled Software:	ScanRouter Lite, DeskTopBinder Lite

Specifications subject to change without notice.



High-performance capabilities to meet your business requirements.

- Print Speeds of 90 & 105 ppm
- True 1200 dpi Resolution
- 8,050-sheet Total Paper Supply
- 100-sheet Automatic Reversing Document Feeder
- 80 images per minute Scanning
- Scan to E-mail (standard with the Printer/Scanner Kit)
- Covers, Tabs, Chapters, Collating, Page Numbering
- Stamping, Stapling, Punching
- Versatile Bypass
- Interposer Capability
- Professional Finishing



Aficio 2105 System



Aficio 2090 System



On Target



Minimum System Requirements:

- Window 98 or newer, 400 Mhz Pentium III with 64 MB RAM
- 800 x 600 Screen resolution: thousands of colors minimum (16 bit)
- 16x CD
- Speakers
- 16 bit Sound Blaster or Sound Blaster-compatible sound card
- Quicktime 5.0 or later

RICOH engineering and cutting-edge technology assures that your heaviest workloads and tightest deadlines are always satisfied. From document input and creation to management and output, these versatile high-volume production solutions offer:

- Maximum Durability For Reliable Production
- Consistent High-Quality Imaging
- Superior Printing Performance and Productivity

Aficio® 2090 & 2105

Configured to Meet Your Requirements

Copier/Printer/Scanner Configuration



Shown with 50-Sheet SR860 Finisher

- Aficio 2090 & 2105 System
- Large Capacity Tray
- Finisher
 - Saddle Stitch Finisher (SR860 for Aficio 2090 only)
 - 100 Sheet (SR840)
- 2 or 3 Hole Punch
- Interposer
- Bypass Tray
- Printer/Scanner Kit Type 2105
- Adobe PostScript3
- 256MB Memory (required for printing)
- DeskTopBinder
- ScanRouter

Features

- Auto Duplex
- Auto Image Density
- Auto Paper Select
- Auto Reduce/Enlarge
- Auto Start
- Auto Tray Switching
- Book Copy
- Booklet Mode
- Centering
- Chapters (100)
- Combine Originals
- Connect Copy (Option)
- Covers/Slip Sheets
- Directional Magnification
- Document Server
- Double Copy
- Electronic Sorting
- Erase Center/Border
- Image Rotation
- Image Repeat
- Interrupt
- Job Preset (20)
- Job Program (25)
- Magazine Mode
- Margin Adjustment
- Mixed Size Originals
- Paper Designate
- Photo Mode
- Repeat Copy
- Sample Copy
- Scan Once, Print Many
- Series Copying
- Shrink and Center
- Size Magnification
- Stamping
- Timers
- User Codes (500)
- Weekly Timer

Copier Configuration



Shown with 100-Sheet SR840 Finisher

- Aficio 2090 & 2105 System
- Large Capacity Tray
- Finisher
 - Saddle Stitch Finisher (SR860 for Aficio 2090 only)
 - 100 Sheet (SR840)
- 2 or 3 Hole Punch
- Interposer
- Bypass Tray



EPA 2000 Office Products Partner of the Year (5th consecutive year)
EPA 2000 Labeling Partner of the Year
Ricoh Corporation has determined that this product meets the Energy Star[®] guidelines for energy efficiency.



Ricoh Company, Ltd. has been granted a certificate of ISO 9001, which is the International Standard for Quality Systems.

RICOH[®]
Image Communication

Ricoh Corporation, Five Dedrick Place, West Caldwell, NJ 07006
Phone: (973) 882-2000 • www.ricoh-usa.com